

CATALOGUE



INNOVATION FOR
TELECOM WORLD

A PRIVATE
VENTURE COMPANY

CATALOGUE FOR ANTENNAS

Established in 2012, Signity RF Solutions is one of the distinguished business firm involved in manufacturing, trading, importing and supplying of GPS And GSM Antennas, Radio Frequency Antennas, Patch Antennas, Whip Antennas and many more. We also providing services of Antennas Installation Services. Fabricated with supremacy, these presented products are immensely credited in the industry due to their longer life, perfect designs and durable finish standards.. Valued among our patrons, these products could be acquired from us at pocket-friendly rates. Additionally, to eradicate all the faults present in the consignment, these are well-examined on assorted restrictions of quality before shipment. We import from countries like China and Taiwan.

We are bestowed with a team of highly competent executives that aspires to provide supreme fulfillment to the clients. For this reason, they put forth efforts in bringing forth a gamut, which suffices the varied demands of the customers to a huge extent. Additionally, they hold enormous industry expertise and rich competence in their individual fields, grounded on which, they are assigned roles



GPS+GSM Combination Antennas



SRFS-0822GPS28A

GPS+GSM Combination Antenna



SRFS-0822GPS28B

GPS+GSM Combination Antenna



SRFS-0822GPS28C

GPS+GSM Combination Antenna

Model	SRFS-0822GPS28A		SRFS-0822GPS28B		SRFS-0822GPS28C	
Electrical specifications						
Frequency	1575.42±5	824-960/1710-2170	1575.42±5	824-960/1710-2170	1575.42±5	824-960/1710-217
VSWR	≤2.0	≤2.0	≤2.0	≤2.0	≤2.0	≤2.0
Gain(dBi)	2	2	2	2	2	2
LNA Gain(dBi)	28	/	28	/	28	/
Noise Figure(dB)	<1.5	/	<1.5	/	<1.5	/
Polarization	RHCP	Vertical	RHCP	Vertical	RHCP	Vertical
Impedance(Ω)	50	50	50	50	50	50
DC Voltage(V)	3-5	/	3-5	/	3-5	/
Mechanical specifications						
Cable Length(m)	3 or customized		3 or customized		3 or customized	
Connector	Fakra or customized		Fakra or customized		Fakra or customized	
Dimension(mm)	Φ80×14		60×51×15.5		Φ46×15	
Net Weight(g)	142		150		160	
Mounting Way	Magnet		Magnet		Screw	
Waterproof	IP67		IP67		IP67	
Description: Apply to car navigation, logistics positioning and so on.						

GPS ACTIVE NAVIGATION ANTENNAS



SRFS GPS28A-1.5
GPS Antenna



SRFS-GPS28B-3
GPS Antenna



SRFS-GPS28C-3
GPS Antenna



SRFS-GPS40D-0.5
Marine GPS Antenna

Model	SRFS-GPS28A-1.5	SRFS-GPS28B-3	SRFS-GPS28C-3	SRFS-GPS40D-0.5
Electrical specifications				
Frequency range-MHz	1575.42±5	1575.42±5	1575.42±5	1575.42±5
VSWR	≤2.0	≤2.0	≤2.0	≤2.0
LNA Gain -dBi	28	28	28	40
Noise Figure-dB	<1.5	<1.5	<1.5	<1.5
Polarization	RHCP	RHCP	RHCP	RHCP
Impedance-Ω	50	50	50	50
DC Voltage -V	3-5	3-5	3-5	3-5
Mechanical specifications				
Cable Length(m)	1.5 or customized	3 or customized	3 or customized	0.5 or customized
Connector	SMA-J or customized	SMA-J or customized	Fakra or customized	BNC or customized
Dimension (mm)	46×38×13	50×37×17	Φ46×15	Φ95×130
Net Weight (gm)	75	77	77	200
Mounting Way	Magnet or Adhesive	Magnet or Adhesive	Screw	Pole
Operation Temperature(°C)	-40~+60	-40~+60	-40~+60	-40~+60
Waterproof	IP67	IP67	IP67	IP67
Description: Apply to car navigation, logistics positioning, sea navigation and so on.				

Internal GPS Antennas



SRFS-IGPS28A-60
Internal GPS Antenna

SRFS-IGPS18B-30
Internal GPS Antenna

SRFS-IGPS18C-60
Internal GPS Antenna

SRFS-IGPS18D-60
Internal GPS Antenna

Model	SRFS-IGPS28A-60	SRFS-IGPS18B-30	SRFS-IGPS18C-60	SRFS-IGPS18D-60
Electrical specifications				
Frequency Range (MHz)	1575.42	1575.42	1575.42	1575.42
VSWR	≤2.0	≤2.0	≤2.0	≤2.0
Bandwidth(MHz)	±2	±2	±2	±2
LNA Gain (dBi)	28	18	18	18
Noise Figure (dB)	<1.5	<1.5	<1.5	<1.5
Polarization	RHCP	RHCP	RHCP	RHCP
Impedance (Ω)	50	50	50	50
DC Voltage (V)	3-5	3-5	3-5	3-5
Mechanical specifications				
Cable Length (mm)	60 or customized	30 or customized	60 or customized	60 or customized
Connector	IPEX or customized	IPEX or customized	IPEX or customized	IPEX or customized
Dimension (mm)	25×25×7.5	18×18×6.5	15×15×6.5	6×15×4.5
Net Weight (gm)	21	8	7	3.5
Operation Temperature(°C)	-40~+60	-40~+60	-40~+60	-40~+60
Mounting Way	embedded	embedded	embedded	embedded
Description: Embedded internal type, applied to car navigation, logistics positioning and so on.				

DVB – T PASSIVE ANTENNAS



SRFS-0208DTF
DVB-T Antenna



SRFS-0208DTE
ATSC Antenna



SRFS-0208DTD
DVB-T Antenna



SRFS-0208DTB
DVB-T Antenna

Model	SRFS-0208DTF	SRFS-0208DTE	SRFS-0208DTD	SRFS-0208DTB
Electrical specifications				
Frequency Range(MHz)	174-230/470-860	174-230/470-860	174-230/470-860	174-230/470-860
VSWR	≤2.0	≤2.0	≤2.0	≤2.0
Gain(dBi)	3.0	3.0	2.0	5.0
Polarization	Vertical	Vertical	Vertical	Vertical
Impedance(Ω)	75	75	75	75
Max.Power(W)	50	50	50	50
Mechanical specifications				
Connector	IEC-J or customized	MCX-J or customized	SMA-J or customized	SMA-J or customized
Cable Length(m)	3 or customized	1.5 or customized	1.5 or customized	1.5 or customized
Dimension(mm)	Φ60×400	Φ43×(Extension365) (Truncated120)	Φ29×112	Φ63×129
Net Weight(gm)	170	41	50	190
Mounting Way	Screw	Magnetic	Magnet	Magnet
Operation Temperature(°C)	-40~+60	-40~+60	-40~+60	-40~+60
Humidity(%)	5~95	5~95	5~95	5~95
Description: Apply to mobile TV terminals.				

DVB-T PASSIVE ANTENNA



SRFS-0208DTF
DVB-T Antenna



SRFS-0208DTE
ATSC Antenna



SRFS-0208DTD
DVB-T Antenna



SRFS-0208DTB
DVB-T Antenna

Model	SRFS-0208DTF	SRFS-0208DTE	SRFS-0208DTD	SRFS-0208DTB
Electrical specifications				
Frequency Range (MHz)	174-230/470-860	174-230/470-860	174-230/470-860	174-230/470-860
VSWR	≤2.0	≤2.0	≤2.0	≤2.0
Gain (dBi)	3.0	3.0	2.0	5.0
Polarization	Vertical	Vertical	Vertical	Vertical
Impedance(Ω)	75	75	75	75
Max.Power(W)	50	50	50	50
Mechanical specifications				
Connector	IEC-J or customized	MCX-J or customized	SMA-J or customized	SMA-J or customized
Cable Length(m)	3 or customized	1.5 or customized	1.5 or customized	1.5 or customized
Dimension(mm)	Φ60×400	Φ43×(Extension365) (Truncated120)	Φ29×112	Φ63×129
Net Weight(gm)	170	41	50	190
Mounting Way	Screw	Magnetic	Magnet	Magnet
Operation Temperature(°C)	-40~+60	-40~+60	-40~+60	-40~+60
Humidity(%)	5~95	5~95	5~95	5~95
Description: Apply to mobile TV terminals.				

DVB – T ACTIVE ANTENNA



SRFS-0208ATB18
DVB-T Active Antenna



SRFS-0208ATC18
DVB-T Active Antenna



SRFS-0208ATA18
DVB-T Active Antenna



SRFS-0208ATA18A
DVB-T Active Antenna

Model	SRFS-0208ATB18	SRFS-0208ATC18	SRFS-0208ATA18	SRFS-0208ATA18A
Electrical specifications				
Frequency Range (MHz)	174-230/470-860	174-230/470-860	174-230/470-860	174-230/470-860
VSWR	≤2.0	≤2.0	≤2.0	≤2.0
LNA Gain (dBi)	18	18	18	18
Polarization	Vertical	Vertical	Vertical	Vertical
Impedance(Ω)	75	75	75	75
DC Voltage(V)	3-5	3-5	3-5	3-5
Max. Power (W)	50	50	50	50
Mechanical specifications				
Connector	IEC-J or customized	F-J or customized	F-J or customized	DC 3.5
Cable Length(m)	5 or customized	3 or customized	3 or customized	5 or customized
Dimension(mm)	Φ50×132	35×219	21×9×200	21×9×200
Net Weight(g)	184	72	54	91
Radome material	Plastic	Plastic	Plastic	Plastic
Mounting Way	Magnet	3M Adhesive	3M Adhesive	3M Adhesive
Operation Temperature(°C)	-40~+60	-40~+60	-40~+60	-40~+60
Humidity(%)	5~95	5~95	5~95	5~95
Description: Apply to mobile TV terminals.				

CAR ANTENNAS



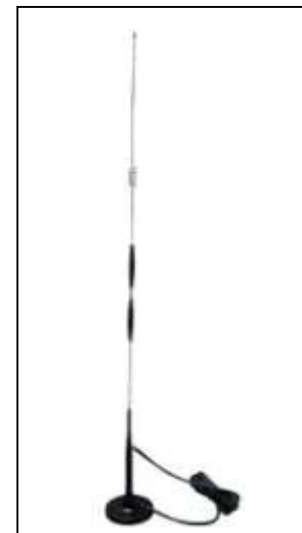
SRFS-0918MSA-3
GSM Vehicle Antenna



SRFS-0918MSB5A-1.5
GSM Vehicle Antenna



SRFS-0918MSB5-3
GSM Vehicle Antenna



SRFS-0918MSB7-3
GSM Vehicle Antenna

Model	SRFS-0918MSA-3	SRFS-0918MSB5A-1.5	SRFS-0918MSB5-3	SRFS-0918MSB7-3
Electrical specifications				
Frequency Range(MHz)	890-960/1710-1990	890-960/1710-1990	890-960/1710-1990	890-960/1710-1990
VSWR	≤2.0	≤2.0	≤2.0	≤2.0
Gain(dBi)	3.0	5.0	5.0	7.0
Polarization	Vertical	Vertical	Vertical	Vertical
Impedance(Ω)	50	50	50	50
Max. Power(W)	50	50	50	50
Mechanical specifications				
Connector	SMA-J or customized	SMA-J or customized	SMA-J or customized	SMA-J or customized
Cable Length(m)	3or customized	1.5or customized	3or customized	3or customized
Dimension(mm)	Φ48×385	Φ84×475	Φ84×720	Φ84×810
Net Weight(gm)	120	395	397	400
Radome Material	-40~+60	-40~+60	-40~+60	-40~+60
Operation Temperature-(°C)	Magnet	Magnet	Magnet	Magnet
Description: Apply to CDMA800/GSM network terminals and car mobile terminals.				

GSM MAGNETIC BASE ANTENNAS



SRFS-0918SA-3
GSM Vehicle Antenna



SRFS-0918SB-3
GSM Vehicle Antenna



SRFS-0918SC-3
GSM Vehicle Antenna



SRFS-0918SD5-3
GSM Vehicle Antenna

Model	SRFS-0918SA-3	SRFS-0918SB-3	SRFS-0918SC-3	SRFS-0918SD5-3
Electrical specifications				
Frequency Range(MHz)	824-960/1710-1990	824-960/1710-1990	824-960/1710-1990	824-960/1710-1990
VSWR	≤2.0	≤2.0	≤2.0	≤2.0
Gain-dBi	2.0	2.0	2.0	5.0
Polarization	Vertical	Vertical	Vertical	Vertical
Impedance(Ω)	50	50	50	50
Max. Power(W)	50	50	50	50
Mechanical specifications				
Connector	SMA-J or customized	SMA-J or customized	SMA-J or customized	SMA-J or customized
Cable Length(m)	3 or customized	3 or customized	3 or customized	3 or customized
Dimension(mm)	Φ29×200	Φ42×290	Φ45×290	Φ48×470
Net Weight(Gm)	38	45	45	130
Temperature (°C)	-40~+60	-40~+60	-40~+60	-40~+60
Description: Apply to CDMA800/GSM network terminals and car mobile terminals.				

TERMINAL ANTENNAS



SRFS-0918TEA
GSM Antenna



SRFS-0918TEB
GSM Antenna



SRFS-0819TEC
GSM Antenna



SRFS-0918TED
GSM Antenna

Model	SRFS-0918TEA	SRFS-0918TEB	SRFS-0819TEC	SRFS-0918TED
Electrical specifications				
Frequency Range(MHz)	890-960/1710-1880	890-960/1710-1880	824-960/1710-1990	890-960/1710-1880
VSWR	≤2.0	≤2.0	≤2.0	≤2.0
Gain(dBi)	2.0	2.0	2.0	2.0
Polarization	Vertical	Vertical	Vertical	Vertical
Impedance(Ω)	50	50	50	50
Max. Power(W)	50	50	50	50
Mechanical specifications				
Connector	SMA-JW	SMA-JW	SMA-JW	SMA-JW
Dimension(mm)	Φ10.5×51	Φ8×59	Φ10.5×115	Φ10.5×108
Net Weight(gm)	9	7	18	12
Radome material	Plastic	Plastic	Plastic	Plastic
Temp.	-40~+60	-40~+60	-40~+60	-40~+60
Humidity(%)	5~95	5~95	5~95	5~95
Description: Apply to GSM900/GSM1800 terminal equipment and GPRS wireless transmission.				

TERMINAL ANTENNAS



**SRFS-0918TEF
GSM Antenna**



**SRFS-0918TEG
GSM Antenna**



**SRFS-0918TEH
GSM Antenna**



**SRFS-0918TEG
GSM Antenna**

Model	SRFS-0918TEF	SRFS-0918TEG	SRFS-0819TEH	SRFS-0918TEG
Electrical specifications				
Frequency Range (MHz)	890-960/1710-1880	890-960/1710-1880	824-960/1710-1990	890-960/1710-1880
VSWR	≤2.0	≤2.0	≤2.0	≤2.0
Gain(dBi)	2.0	2.0	2.0	2.0
Polarization	Vertical	Vertical	Vertical	Vertical
Impedance(Ω)	50	50	50	50
Max. Power(W)	50	50	50	50
Mechanical specifications				
Connector	SMA-J	SMA-J	SMA-J	SMA-JW
Dimension(mm)	Φ10.5×51	Φ8×51	Φ10.5×76	Φ10.5×51
Net Weight(gm)	9	7	18	12
Radome material	Plastic	Plastic	Plastic	Plastic
Temp (°C)	-40~+60	-40~+60	-40~+60	-40~+60
Humidity-%	5~95	5~95	5~95	5~95
Description: Apply to GSM900/GSM1800 terminal equipment and GPRS wireless transmission.				

TERMINAL ANTENNAS



SRFS-0819TMA
GSM Antenna



SRFS-0819TMB
GSM Antenna



SRFS-2100TMC
3GHz Antenna

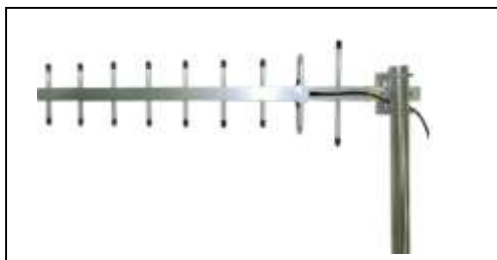


SRFS-0922TMD
3GHz Antenna

Model	SRFS-0819TMA	SRFS-0819TMB	SRFS-2100TMC	SRFS-0922TMD
Electrical specifications				
Frequency Range (MHz)	824-960/1710-1990	824-960/1710-1990	2100-2170	890-960/1710-2170
VSWR	≤2.0	≤2.0	≤2.0	≤2.0
Gain(dBi)	2.0	5/4	2.0	2/3
Polarization	Vertical	Vertical	Vertical	Vertical
Impedance(Ω)	50	50	50	50
Max. Power(W)	50	50	50	50
Mechanical specifications				
Connector	SMA-J or customized	SMA-J or customized	SMA-J or customized	N-K
Dimension(mm)	Φ29.5×89	Φ29.5×89	Φ30×81	Φ20×185
Net Weight(gm)	60	92	66	120
Radome material	Plastic	Plastic	Plastic	Plastic
Temp (°C)	-40~+60	-40~+60	-40~+60	-40~+60
Humidity(%)	5~95	5~95	5~95	5~95

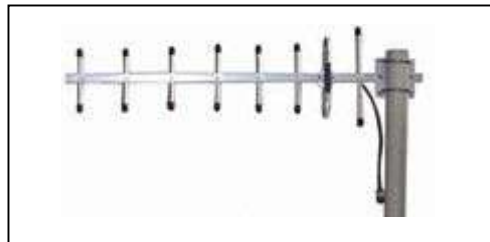
Description: Apply to GSM900/GSM1800 terminal equipment and GPRS wireless transmission.

TERMINAL YAGI ANTENNAS



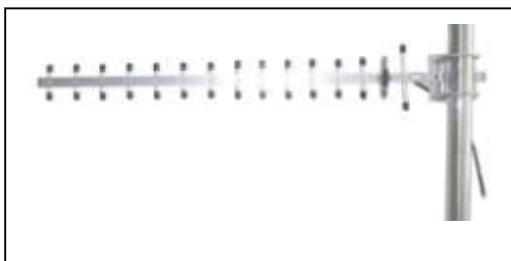
Model: SRFS-800YA9

Name: 800M Yagi Antenna



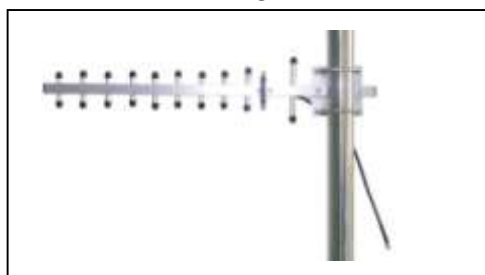
Model: SRFS-900YA8

Name: 900M Yagi Antenna



Model: SRFS-1800YA15

Name: 1800M Yagi Antenna

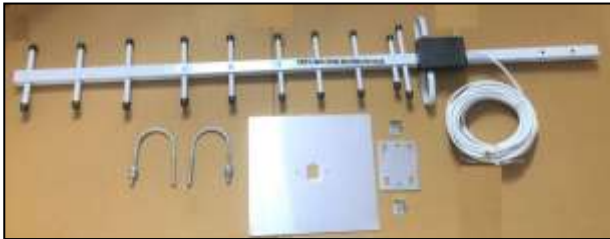


Model: SRFS-2100YA11

Name: 2100M Yagi Antenna

Model	SRFS-800YA9	SRFS-900YA8	SRFS-1800YA15	SRFS-2100YA11
Electrical specifications				
Frequency Range (MHz)	824-894	890-960	1710-1880	2100-2170
VSWR	≤1.5	≤1.5	≤1.5	≤1.5
Gain(dBi)	10	10	15	12
Polarization	Vertical	Vertical	Vertical	Vertical
Impedance(Ω)	50	50	50	50
Max. Power(W)	100	100	100	100
Mechanical specifications				
Connector	TNC or customized	N-K or customized	SMA or customized	SMA or customized
Cable Length(m)	0.3 or customized	0.3 or customized	0.3 or customized	0.3 or customized
Dimension(mm)	890×190	795×190	710×105	650×95
Net Weight(g)	380	360	332	270
Operation Temperature(°C)	-40~+60	-40~+60	-40~+60	-40~+60
Mounting Way	PoleΦ40-50	PoleΦ40-50	PoleΦ40-50	PoleΦ40-50
Description: Apply to GSM900/GSM1800 terminal equipment and GPRS wireless transmission.				

YAGI ANTNNAS



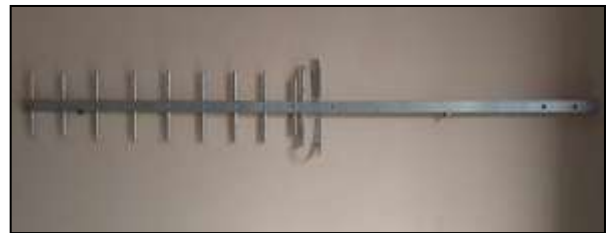
18 dBi YAGI ANTENNA DUAL BAND
PART NO. SRFS-800/2500-RG58010YU018



SOLID ELEMENT 21 dBi YAGI ANTENNA
PART NO. SRFS – 698/2700- RG58010YU021



12 dBi DIRECTIONAL YAGI ANTENNA
PART NO. SRFS-800/2500-RG58010YU12



18 dBi LONG BOOM YAGI ANTENNA
PART NO. SRFS – 800/2500-LB1300RG58010YU18

Model	SRFS-800/2500-RG58010YU018	698/2700-RG58010YU021	SRFS-800/2500-RG58010YU12	SRFS – 800/2500-LB1300RG58010YU18
Electrical Specification				
Frequency Range	824-960/1710-2500 MHz	898-960/1710-2700 MHz (Dual Band)	824-960/1710-2500 MHz (Dual Band)	824-960/1710-2500 MHz (Dual Band)
Gain	18 dBi	21 dBi	12 dBi	18 dBi
VSWR	≤ 1.5	<1.5	≤1.5	<1.5
Return Loss	-15 dB	-15dB	-15dB	-15dB
Impedance	50Ω	50Ω	50Ω	50Ω
Lightening Protection	Direct Ground	Direct Ground	Direct Ground	Direct Ground
Maximum Input Power	250 W	250 W	250 W	250 W
Polarization	Vertical or Horizontal	Vertical or Horizontal	Vertical or Horizontal	Vertical or Horizontal
Radiation direction	Directional	Directional	Directional	Directional
HPBW	H:80°; V: 60°	H:80°; V: 60°	H:80°; V: 60°	H:80°; V: 60°
Front To Back Ratio	16 dB	16 dB	16 dB	16 dB
Mechanical Specification				
Cable	RG58 10 Mtr or Customized	RG58 10 Mtr or Customized	RG58 10 Mtr or Customized	RG58 10 Mtr or Customized
Connector	SMA (M) or Customized	SMA (M) or Customized	SMA (M) or Customized	SMA (M) or Customized
Antenna Dimension(mm)	1040*210*35	1140*210*35	700*210*35	1300*210*35
Boom Pipe, Reflectors, Support Boom Diameter	Aluminum	Aluminum	Aluminum	Aluminum
Elements Diameter	20 mm (Al-Square pipe)	20 mm (Al-Square pipe)	20 mm (Al-Square pipe)	20 mm (Al-Square pipe)
Wind Pressure	7 mm (Al-Round Pipe)	7 mm (Al-Round Solid Pipe)	7 mm (Al-Round Pipe)	7 mm (Al-Round Pipe)
Radiating Material	100km/h	200km/h	100km/h	100km/h
Operating Temperature	Copper	Copper	Copper	Copper
Humidity	-40°C ~85°C	-40°C ~85°C	-40°C ~85°C	-40°C ~85°C
Environmental Friendly	5~95%	5~95%	5~95%	5~95%
IP Rating	ROHS Compliant	ROHS Compliant	ROHS Compliant	ROHS Compliant
	IP65	IP65	IP65	IP65

DATA TRANSMISSION & SECURITIES ANTENNAS



**SRFS-0918CPA-3
GSM Antenna**



**SRFS-0919CPB-3
GSM Antenna**



**SRFS-0919CPC-3
GSM Antenna**



**SRFS-0919CPD-3
GSM Antenna**

Model	SRFS-0918CPA-3	SRFS-0919CPB-3	SRFS-0919CPC-3	SRFS-0919CPD-3
Electrical specifications				
Frequency Range(-MHz)	890-960/1710-1880	890-960/1710-1990	890-960/1710-1990	890-960/1710-1990
VSWR	≤2.0	≤2.0	≤2.0	≤2.0
Gain(dBi)	2.0	2.0	2.0	2.0
Polarization	Vertical	Vertical	Vertical	Vertical
Impedance(Ω)	50	50	50	50
Max. Power(W)	50	50	50	50
Mechanical specifications				
Connector	SMA-J or customized	SMA-J or customized	SMA-J or customized	SMA-J or customized
Cable Length(m)	3 or customized	3 or customized	3 or customized	3 or customized
Dimension(mm)	99×17.5×9	106×8.6×11.5	115.5×21.5×5.5	123×21.6×6
Net Wight(gm)	51	20	55	58
Radome Material	Plastic	Plastic	Plastic	Plastic
Operation Temperature(℃)	-40~+60	-40~+60	-40~+60	-40~+60
Mounting Way	3M Adhesive	3M Adhesive	3M Adhesive	3M Adhesive

Description: Compact structure and nice design, patched by 3M Glues, which is applied to car security and WAMR.

LPDA ANTENNAS AND DECORATIVE ANTENNAS



Model: SRFS-0825LA
Name: LPDA Antenna

Model: SRFS-0825LB
Name: LPDA Antenna

Model: SRFS-0825WA
Name: Wall Mount Antenna

Model: SRFS-0825CD
Name: Ceiling Mount Antenna

Model	SRFS-0825LA	SRFS-0825LB	SRFS-0825WA	SRFS-0825CD
Electrical specifications				
Frequency Range(MHz)	806-960/1710-2500	806-960/1710-2500	806-960/1710-2500	806-960/1710-250
VSWR	≤1.5	≤1.5	≤1.5	≤1.5
Gain(dBi)	7/9	10/11	7/10	3/5
Vertical Beamwidth(°)	50/40	60/55	55/45	120/120
Horizontal Beamwidth(°)	65/50	90/70	70/60	360/120
F/B Ratio(Db)	≥18	≥19	----	----
Polarization	Vertical	Vertical	Vertical	Vertical
Impedance(Ω)	50	50	50	50
Max. Power(W)	100	100	50	50
Lightning Protection	DC Ground	DC Ground	DC Ground	DC Ground
Mechanical specifications				
Connector	N-K or customized	N-K or customized	N-K or customized	N-K or customized
Dimension(mm)	295×210×64	400×265×65	210×180×47	Φ187×86×M18
Net Weight (gm)	723	1000	415	198
Mounting Mast Diameter(mm)	Pole Φ40-50	Pole Φ40-50	Wall Mount	Ceiling Mount
Operation Temperature(°C)	-40~+60	-40~+60	-40~+60	-40~+60
Description: Apply to base SRFStion, indoor coverage system and GSM/CDMA/PCS/3G/WLAN system.				

PATCH PANEL ANTENNAS



SRFS-698/2700-12-10M-OD
12 dBi Patch Panel Antenna



SRFS-698/2700-14-10M-OD
14 dBi Patch Panel Outdoor with cable



SRFS-698/2700-9-0.3M-OD
9 dBi Indoor patch panel Antenna



SRFS-698/2700-14-OD
14 dBi Patch Panel Outdoor

Model	SRFS-698/2700-12-10M-OD	SRFS-698/2700-14-10M-OD	SRFS-698/2700-9-0.3M-OD	SRFS-698/2700-14-OD
Electrical Specification				
Frequency Range	698-2700 MHz	698-2700 MHz	698-2700 MHz	698-2700 MHz
Gain	12 dBi	14 dBi	9 dBi	14 dBi
VSWR	≤ 1.7	≤ 1.7	≤ 1.7	≤ 1.7
Polarization	Vertical	Vertical	Vertical	Vertical
PIM, 3rd Order, 2x20W	≤ -130 dBc	≤ -130 dBc	≤ -130 dBc	≤ -130 dBc
Front to Back Ratio	≥ 13 dB	≥ 13 dB	≥ 13 dB	≥ 13 dB
Horizontal Beam width	65°	65°	65°	65°
Vertical Beam width	55°	55°	55°	55°
Input Impedance	50 Ω	50 Ω	50 Ω	50 Ω
Max. Power	100 W	100 W	100 W	100 W
Lightning Protection	DC Ground	DC Ground	DC Ground	DC Ground
Mechanical Specification				
Cable	RG58 10 mtr or Customized	RG58 10 mtr or Customized	RG58 300 mm	No Cable
Connector	SMA (M) or Customized	SMA (M) or Customized	N (F) or Customized	N Female or Customized
Dimensions	168x158x50 mm	168x158x50 mm	168x158x50 mm	168x158x50 mm
Weight	1.1kg	1.1kg	1.1kg	1.1kg
Reflector Material	Aluminum/PCB	Aluminum/PCB	Aluminum/PCB	Aluminum/PCB
Radome Material	ABS /PP	ABS /PP	ABS /PP	ABS /PP
Rated Wind Velocity	210 km/h	210 km/h	210 km/h	210 km/h
Operating Temperature	40°C to +65 °C	40°C to +65 °C	40°C to +65 °C	40°C to +65 °C

INDOOR DISTRIBUTED ANTENNA



Model: SRFS-0825CA
Name: CeilingAntenna



Model: SRFS-0825CB
Name: CeilingAntenna



Model: SRFS-0825CC
Name: Ceiling Antenna



Model: SRFS-0825CE
Name: Ceiling Antenna

Model	SRFS-0825CA	SRFS-0825CB	SRFS-0825CC	SRFS-0825CE
Electrical specifications				
Frequency Range (MHz)	806-960/1710-2500	806-960/1710-2500	806-960/1710-2500	806-960/1710-2500
VSWR	≤1.5	≤1.5	≤1.5	≤1.5
Gain(dBi)	2/5	2/5	2/5	2/5
Vertical Beamwidth(°)	55	120	55	55
Horizontal Beamwidth(°)	/	65/50	/	/
Polarization	Vertical	Vertical	Vertical	Vertical
Impedance(Ω)	50	50	50	50
Max. Power(W)	50	50	50	50
Lightning protection	DC Ground	DC Ground	DC Ground	DC Ground
Mechanical specifications				
Connector	N-K or customized	N-K or customized	N-K or customized	N-K or customized
Dimension(mm)	Φ166×90×M18	Φ170×70×M18	Φ123×72×M18	Φ167×74×M18
Net Weight(gm)	205	260	198	246
Mounting Way	Ceiling Mount	Ceiling Mount	Ceiling Mount	Ceiling Mount
Operation Temperature(°C)	-40~+60	-40~+60	-40~+60	-40~+60
Description: Apply to indoor coverage system and GSM/CDMA/PCS/3G/WLAN system.				

WLAN AND WIFI ANTENNAS



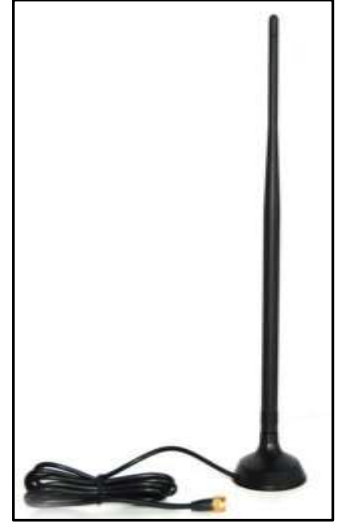
Model: SRFS-2400MSC9A-1.5
Name: 2.4G Magnetic Antenna



Model: SRFS-2400SE-3
Name: 2.4G Magnetic Antenna



Model: SRFS-2400SF-3
Name: 2.4G Magnetic Antenna



Model: SRFS-2400SG-3
Name: 2.4G Magnetic Antenna

Model	SRFS-2400MSC9A-1.5	SRFS-2400SE-3	SRFS-2400SF-3	SRFS-2400SG-3
Electrical specifications				
Frequency Range (MHz)	2400-2483	2400-2483	2400-2483	2400-2483
VSWR	≤2.0	≤2.0	≤2.0	≤2.0
Gain(dBi)	9.0	9.0	9.0	7.0
Polarization	Vertical	Vertical	Vertical	Vertical
Impedance(Ω)	50	50	50	50
Max. Power(W)	50	50	50	50
Mechanical specifications				
Connector	RPSMA-J	RPSMA-J	RPSMA-J	RPSMA-J
Cable Length(m)	1.5 or customized	3 or customized	3 or customized	3 or customized
Dimension(mm)	114×69×430	Φ60×435	Φ61×420	Φ62×260
Net Weight(gm)	233	124	107	64
Radome Material	Plastic/ABS	Plastic/ABS	Plastic/ABS	Plastic/ABS
Operation Temperature(°C)	-40~+60	-40~+60	-40~+60	-40~+60

Description: Apply to 2.4GHz WLAN/WiFi system and car mobile communication system, with hotspot covered.

WLAN AND WIFI ANTENNAS



Model: **SRFS-2400TFB5**
Name: **2.4G Folded Antenna**



Model: **SRFS-2400TFC5**
Name: **2.4G Folded Antenna**



Model: **SRFS-2400TFD5**
Name: **2.4G Folded Antenna**



Model: **SRFS-2400TFE4**
Name: **2.4G Folded Antenna**

Model	SRFS-2400TFB5	SRFS-2400TFC5	SRFS-2400TFD5	SRFS-2400TFE4
Electrical specifications				
Frequency Range (MHz)	2400-2483	2400-2483	2400-2483	2400-2483
VSWR	≤2.0	≤2.0	≤2.0	≤2.0
Gain(dBi)	5.0	5.0	5.0	4.0
Polarization	Vertical	Vertical	Vertical	Vertical
Impedance(Ω)	50	50	50	50
Max. Power(W)	50	50	50	50
Mechanical specifications				
Connector	RPSMA-J	RPSMA-J	RPSMA-J	RPSMA-J
Dimension (mm)	Φ14×210	Φ13.5×186	Φ13×195	Φ8×170
Radome Material	Plastic	Plastic	Plastic	Plastic
Net Weight(Gm)	33	17	21	13
Operation Temperature(°C)	-40~+60	-40~+60	-40~+60	-40~+60
Humidity(%)	5~95	5~95	5~95	5~95
Description: Apply to 2.4GHz WLAN/WiFi system.				

WLAN AND WIFI ANTENNAS



Model: SRFS-2400TFF
Name: 2.4G Folded Antenna

Model: SRFS-2400TFG5
Name: 2.4G Folded Antenna

Model: SRFS-2400TFH
Name: 2.4G Folded Antenna

Model: SRFS-2400TFI7
Name: 2.4G Folded Antenna

Model	SRFS-2400TFF	SRFS-2400TFG5	SRFS-2400TFH	SRFS-2400TFI7
Electrical specifications				
Frequency Range (MHz)	2400-2483	2400-2483	2400-2483	2400-2483
VSWR	≤2.0	≤2.0	≤2.0	≤2.0
Gain(dBi)	2.5	5.0	3.0	7.0
Polarization	Vertical	Vertical	Vertical	Vertical
Impedance(Ω)	50	50	50	50
Max. Power(W)	50	50	50	50
Mechanical specifications				
Connector	RPSMA-J	RPSMA-J	RPSMA-J	RPSMA-J
Dimension (mm)	Φ10×110	Φ13×155	12.7×9.8×153	Φ13×255
Net Weight(gm)	8.5	18	14	30
Radome Material	Plastic	Plastic	Plastic	Plastic
Operation Temperature(°C)	-40~+60	-40~+60	-40~+60	-40~+60
Description: Apply to 2.4GHz WLAN/WiFi system.				

WLAN AND WIFI ANTENNAS



Model: SRFS-2400TFJ7
Name: 2.4GHz Antenna



Model: SRFS-2400TFA9
Name: 2.4GHz Antenna



Model: SRFS-2400TFK10
Name: 2.4GHz Antenna



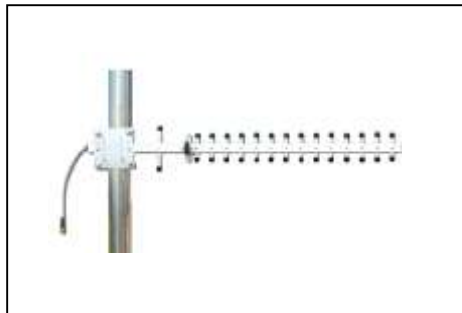
Model: SRFS-2400TFL9
Name: 2.4GHz Antenna

Model	SRFS-2400TFJ7	SRFS-2400TFA9	SRFS-2400TFK10	SRFS-2400TFL9
Electrical specifications				
Frequency Range (MHz)	2400-2483	2400-2483	2400-2483	2400-2483
VSWR	≤2.0	≤2.0	≤2.0	≤2.0
Gain(dBi)	7.0	9.0	10.0	9.0
Polarization	Vertical	Vertical	Vertical	Vertical
Impedance(Ω)	50	50	50	50
Max. Power(W)	50	50	50	50
Mechanical specifications				
Connector	RPSMA-J	RPSMA-J	RPSMA-J	RPSMA-J
Dimension (mm)	Φ13.5×275	Φ13.5×375	Φ13.5×395	Φ13.5×390
Net Weight(gm)	32	50	48	45
Radome Material	Plastic	Plastic	Plastic	Plastic
Operation Temperature(°C)	-40~+60	-40~+60	-40~+60	-40~+60
Humidity(%)	5~95	5~95	5~95	5~95
Description: Apply to 2.4GHz WLAN/WiFi system.				

WLAN AND WIFI ANTENNAS



Model: SRFS-2400YB15
Name: 2.4GHz Yagi Antenna



Model: SRFS-2400YA16
Name : 2.4G Hz Yagi Antenna



Model: SRFS-2400YA18
Name: 2.4GHz Yagi Antenna

Model	SRFS-2400YB15	SRFS-2400YA16	SRFS-2400YA18
Electrical specifications			
Frequency Range(MHz)	2400-2483	2400-2483	2400-2483
VSWR	≤2.0	≤2.0	≤2.0
Gain(dBi)	15	16	18
Vertical Beamwidth(°)	17	24	24
Horizontal Beamwidth (°)	11	26	26
Front-to-Back Ratio (dB)	≥25	≥30	≥32
Polarization	Vertical	Vertical	Vertical
Impedance(Ω)	50	50	50
Max. Power(W)	50	50	50
Lightning protection	DC Ground	DC Ground	DC Ground
Mechanical specifications			
Connector	RPSMA-J	RPSMA-J	RPSMA-J
Dimension(mm)	Φ51×465	610×90	580×70
Net Weight(gm)	415	270	308
Mounting Mast Diameter (mm)	Φ40~50	Φ40~50	Φ40~50

Description: Apply to 2.4GHz WLAN system and 2.4GHz ISM frequency with wireless bridge.

2.3 ~ 2.7 GHz WALL / INDOOR ANTENNAS



Model: SRFS-2327WE10
Name: 2.3-2.7GHz Wall Antenna



Model: SRFS-2327WA12
Name: 2.3-2.7GHz Wall Antenna



Model: SRFS-2327WA12A
Name: 2.3-2.7GHz Wall Antenna

Model	SRFS-2327WE10	SRFS-2327WA12	SRFS-2327WA12A
Electrical specifications			
Frequency Range(MHz)	2300~2700	2300~2700	2300~2700
Gain(dBi)	14x2	14	13
Polarization	Vertical	Vertical	Vertical
VSWR	≤1.5	≤1.5	≤1.5
Horizontal Beamwidth (°)	50	54	54
Vertical Beamwidth(°)	45	32	32
Front-to-Back Ratio (dB)	≥15	≥23	≥23
Impedance(Ω)	50	50	50
Max. Power(W)	50	50	50
Mechanical specifications			
Connector	N-K	N-K	N-K
Dimension(mm)	140×120×38	210×180×45	210×180×45
Net Weight(gm)	0.35	0.5	0.4
Operation Temperature(°C)	-40~+60	-40~+60	-40~+60
<p>Description: Apply to 2.3~2.7GHZ frequency WLAN /Wi-Fi system /ISM frequency, support IEEE802.11b/g Wireless point-to-point, Wireless digital image transmission, Public hotspot.</p>			

2.3 GHz PANEL ANTENNAS



Model: SRFS-2400D90C14
Name: 2.4GHz Panel Antenna



Model: SRFS-2400V90C14
Name: 2.4GHz Panel Antenna



Model: SRFS-2400V120C13
Name: 2.4GHz Panel Antenna

Model	SRFS-2400D90C14	SRFS-2400V90C14	SRFS-2400V120C13
Electrical specifications			
Frequency Range (MHz)	2400~2500	2400~2500	2400~2500
Gain(dBi)	14×2	14	13
Polarization	±45°	Vertical	Vertical
VSWR	≤1.5	≤1.5	≤1.5
Horizontal Beamwidth (°)	90	90	120
Vertical Beamwidth(°)	15	15	15
Front-to-Back Ratio (dBi)	≥25	≥25	≥23
Impedance(Ω)	50	50	50
Max. Power(W)	200	200	200
Mechanical specifications			
Connector	N-K	N-K	N-K
Dimension(mm)	490×128×56	490×128×56	490×128×56
Net Weight(gm)	1.6	1.4	1.4
Operation Temperature(°C)	-40~+60	-40~+60	-40~+60

2.4 GHz FLAT PANEL ANTENNAS



Model: SRFS-2400PG12

Name: 2.4GHz Panel Antenna



Model: SRFS-2400PB14

Name: 2.4GHz Panel Antenna



Model: SRFS-2400PF18

Name: 2.4GHz Panel Antenna



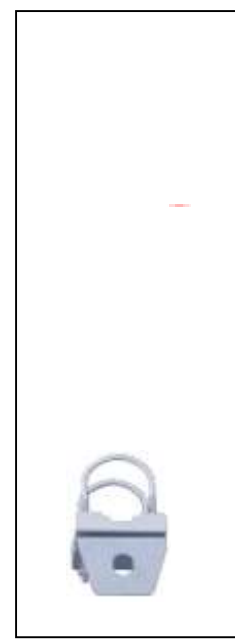
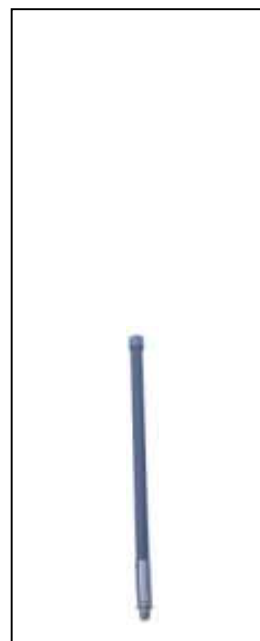
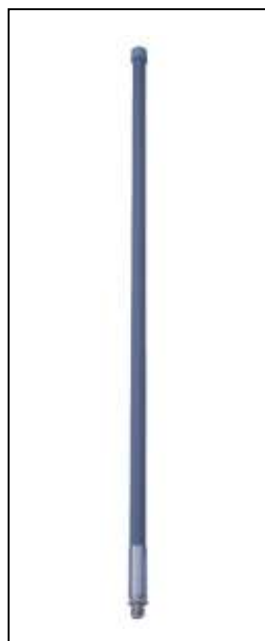
Model: SRFS-2400EPF18

Name: 2.4GHz Panel Antenna

Model	SRFS-2400PG12	SRFS-2400PB14	SRFS-2400PF18	SRFS-2400EPF18
Electrical specifications				
Frequency Range(MHz)	2400~2483	2400~2483	2400~2483	2400~2483
Gain(dBi)	12	14	18	18
Polarization	Vertical	Vertical	Vertical	Vertical
VSWR	≤1.5	≤1.5	≤1.5	≤1.5
Vertical Beamwidth(°)	54	32	20	20
Horizontal Beamwidth (°)	32	30	20	20
Front-to-Back Ratio (dB)	≥25	≥25	≥25	≥25
Impedance(Ω)	50	50	50	50
Max. Power(W)	50	50	50	50
Mechanical specifications				
Connector	N-K	N-K	N-K	N-K
Dimension(mm)	190×190×30	234×194×35	305×305×25	305×305×25
Net Weight(gm)	0.55	0.75	1.4	2.6
Operation Temperature(°C)	-40~+60	-40~+60	-40~+60	-40~+60

Description: For 2.4GHz frequency WLAN / Wi-Fi system / ISM frequency, support IEEE 802.11b/g; Wide range of applications, Wireless digital image transmission, Public hotspot, point-to-point and point-to-multipoint wireless bridge.

2.4 GHz OMNI DIRECTIONAL ANTENNA (A SERIES)



Model: SRFS-2400FA12
Name: 2.4GHz Antenna

Model: SRFS-2400FA10
Name: 2.4GHz Antenna

Model: SRFS-2400FA8
Name: 2.4GHz Antenna

Model: SRFS-2400FA6
Name: 2.4GHz Antenna

Model: SRFS-LC
Name: U Clamp

Model	SRFS-2400FA12	SRFS-2400FA10	SRFS-2400FA8	SRFS-2400FA6
Electrical specifications				
Frequency range (MHz)	2400~2483	2400~2483	2400~2483	2400~2483
Gain (dBi)	12	10	8	6
Polarization	Vertical	Vertical	Vertical	Vertical
VSWR	≤1.5	≤1.5	≤1.5	≤1.5
Vertical Beam width (°)	7	10	16	25
Horizontal Beam width (°)	360	360	360	360
Impedance (Ω)	50	50	50	50
Max. Power (W)	100	100	100	100
Mechanical specifications				
Connector	N-K	N-K	N-K	N-K
Dimension (mm)	Φ21×1200	Φ21×1000	Φ21×550	Φ21×400
Net Weight (kg)	1.2	1.0	0.5	0.4
Operation Temperature (°C)	-40~+60	-40~+60	-40~+60	-40~+60

2.4 GHz GRID PARABOLIC ANTENNAS



Model: SRFS-2400GP19

Name: 2.4GHz Grid Parabolic Antenna



Model: SRFS-2400GP24

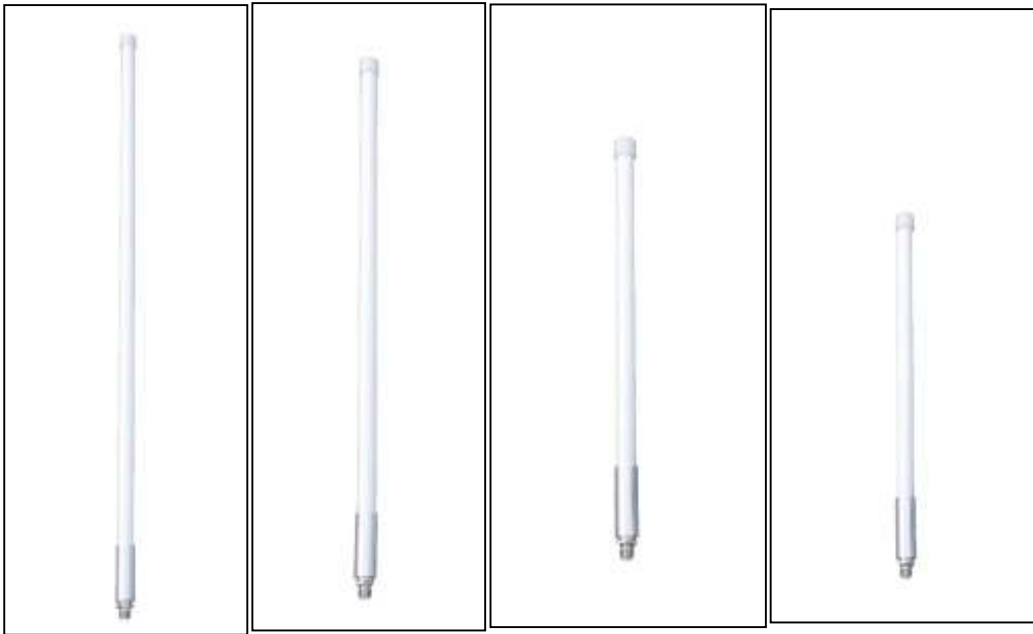
Name: 2.4GHz Grid Parabolic Antenna



Model: SRFS-2400GP27

Name: 2.4GHz Grid Parabolic Antenna

Model	SRFS-2400GP19	SRFS-2400GP24	SRFS-2400GP27
Electrical specifications			
Frequency Range(MHz)	2400~2483	2400~2483	2400~2483
Gain(dBi)	19	24	27
Polarization	Vertical or horizontal	Vertical or horizontal	Vertical or horizontal
VSWR	≤1.5	≤1.5	≤1.5
Horizontal Beamwidth(°)	12	10	6.5
Vertical Beamwidth(°)	16	14	6.5
Front-to-Back Ratio(dB)	≥20	≥25	≥32
Impedance(Ω)	50	50	50
Max. Power(W)	100	100	100
Mechanical specifications			
Connector	N -K	N -K	N -K
Dimension(mm)	600×400	900×600	Φ1200
Net Weight(kg)	2.4	3.7	20
Operation Temperature(°C)	-40~+60	-40~+60	-40~+60
Description: For 2.4GHz frequency WLAN /Wi-Fi system /ISM frequency , Support IEEE802.11b/g ; High gain, good effect, Wireless digital image transmission, point-to-point wireless bridge.			



Model: **SRFS-1921FC11**
Name: **3GHz Antenna**

Model: **SRFS-1921FC10**
Name: **3GHzAntenna**

Model: **SRFS-1921FC8**
Name: **3GHzAntenna**

Model: **SRFS-1921FC6**
Name: **3GHzAntenna**

Model: **SRFS-**
LCName: **U**
Clamp

Model	SRFS-1921FC11	SRFS-1921FC10	SRFS-1921FC8	SRFS-1921FC6
Electrical specifications				
Frequency Range (MHz)	1880~2025	1880~2025	1880~2025	1880~2025
Gain(dBi)	11	10	8	6
Polarization	Vertical	Vertical	Vertical	Vertical
VSWR	≤1.5	≤1.5	≤1.5	≤1.5
Vertical Beamwidth(°)	9	10	16	24
Horizontal Beamwidth(°)	360	360	360	360
Impedance(Ω)	50	50	50	50
Max. Power(W)	100	100	100	100
Mechanical specifications				
Connector	N-K	N-K	N-K	N-K
Dimension(mm)	Φ27×1280	Φ27×1065	Φ27×850	Φ27×530
Net Weight(kg)	0.8	0.68	0.56	0.40
Operation Temperature(°C)	-40~+60	-40~+60	-40~+60	-40~+60
Description: Apply in 3GHz TD-SCDMA network; good radiation, Omni-directional coverage.				

3.5 GHz PANEL ANTENNAS



Model: SRFS-3338D90C17
Name: 3.5GHz PanelAntenna



Model: SRFS-3338V90C17
Name: 3.5GHz Panel Antenna



Model: SRFS-3338V120C16
Name: 3.5GHz Panel Antenna

Model	SRFS-3338D90C17	SRFS-3338V90C17	SRFS-3338V120C16
Electrical specifications			
Frequency Range(MHz)	3300~3800	3300~3800	3300~3800
Gain(dBi)	17×2	17	16
Polarization	±45°	Vertical	Vertical
VSWR	≤1.5	≤1.5	≤1.5
Vertical Beamwidth(°)	7	7	7
Horizontal Beamwidth(°)	90	90	120
Front-to-Back Ratio (dB)	≥28	≥28	≥25
Impedance(Ω)	50	50	50
Max. Power(W)	200	200	200
Mechanical specifications			
Connector	N-K	N-K	N-K
Dimension(mm)	800×128×56	800×128×56	800×128×56
Net Weight(kg)	2.8	2.6	2.6
Operation Temperature(°C)	-40~+60	-40~+60	-40~+60
Description: 3.5GHz WiMAX system; high gain, Sector coverage, Applicable to wireless access systems, Multipoint wireless bridge.			

3.5 GHz FLAT PANEL ANTENNAS



Model: SRFS-3338PG15

Name: 3.5G z Panel Antenna



Model: SRFS-3338PB16

Name: 3.5GHz PanelAntenna



Model: SRFS-3338PD18

Name: 3.5GHz Panel Antenna



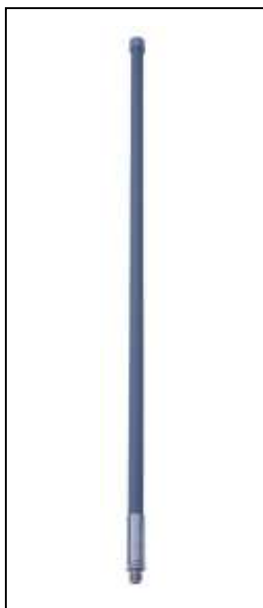
Model: SRFS-3500EPF18

Name: 3.5GHz Panel Antenna

Model	SRFS-3338PG15	SRFS-3338PB16	SRFS-3338PD18	SRFS-3500EPF18
Electrical specifications				
Frequency Range (MHz)	3300~3800	3300~3800	3300~3800	3400~3600
Gain(dBi)	15	16	18	18
Polarization	Vertical or Horizontal	Vertical or Horizontal	Vertical or Horizontal	Vertical or Horizontal
VSWR	≤1.5	≤1.5	≤1.5	≤1.5
Vertical Beamwidth(°)	30	30	17	17
Horizontal Beamwidth(°)	30	24	17	17
Front-to-Back Ratio (dB)	≥25	≥25	≥25	≥25
Impedance (Ω)	50	50	50	50
Max. Power (W)	50	50	50	50
Mechanical specifications				
Connector	N-K	N-K	N-K	N-K
Dimension (mm)	190×190×30	234×194×35	261×261×35	305×305×25
Net Weight (kg)	0.55	0.75	1.4	2.5
Operation Temperature(°C)	-40~+60	-40~+60	-40~+60	-40~+60

Description: For 3.5GHz WiMAX system; small size, low profile, for small area coverage, Applicable to wireless access systems, point-to-point and point-to-multipoint wireless bridge.

3.5 GHz FIBERGLASS OMNI DIRECTIONAL ANTENNAS



Model: SRFS-3500FA12
Name: 3.5GHz Antenna



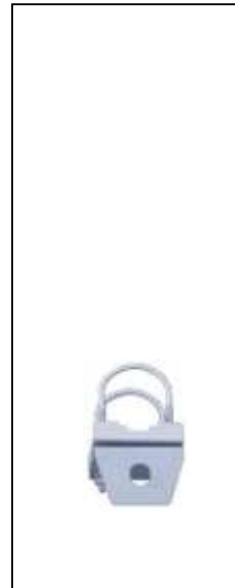
Model: SRFS-3500FA10
Name: 3.5GHz Antenna



Model: SRFS-3500FA8
Name: 3.5GHzAntenna



Model: SRFS-3500FA6
Name: 3.5GHz Antenna



Model: SRFS-LC
Name: U

Model	SRFS-3500FA12	SRFS-3500FA10	SRFS-3500FA8	SRFS-3500FA6
Electrical specifications				
Frequency Range (MHz)	3400~3600	3500~3600	3400~3600	3400~3600
Gain (dBi)	12	10	8	6
Polarization	Vertical	Vertical	Vertical	Vertical
VSWR	≤1.5	≤1.5	≤1.5	≤1.5
Vertical Beamwidth (°)	7	10	16	24
Horizontal Beamwidth (°)	360	360	360	360
Impedance (Ω)	50	50	50	50
Max. Power (W)	100	100	100	100
Mechanical specifications				
Connector	N-K	N-K	N-K	N-K
Dimension (mm)	φ21×900	φ21×600	φ21×500	φ21×300
Net Weight (kg)	0.55	0.68	0.25	0.42
Operation Temperature (°C)	-40~+60	-40~+60	-40~+60	-40~+60
Description: 3.5GHz WiMAX systems; Radiation effects, Wide range of Omni-directional Coverage, Wireless access systems, point-to-multipoint wireless bridge.				

3.5 GHz PARABOLIC ANTENNAS



Model: SRFS-3338GP19
Name: 3.5GHz Antenna



Model: SRFS-3338GP22
Name: 3.5GHz Antenna



Model: SRFS-3338GP25
Name: 3.5GHz Antenna



Model: SRFS-3338GP28
Name: 3.5GHz Antenna

Model	SRFS-3338GP19	SRFS-3338GP22	SRFS-3338P25	SRFS-3338P28
Electrical specifications				
Frequency Range (MHz)	3300~3800	3300~3800	3300~3800	3300~3800
Gain(dBi)	19	22	25	28
Polarization	Vertical or Horizontal	Vertical or Horizontal	Vertical or Horizontal	Vertical or Horizontal
VSWR	≤1.5	≤1.5	≤1.5	≤1.5
Vertical Beamwidth (°)	16	13	10	7.5
Horizontal Beamwidth (°)	12	9	10	7.5
Front-to-Back Ratio (dB)	≥20	≥25	≥32	≥35
Impedance (Ω)	50	50	50	50
Max. Power (W)	100	100	100	100
Mechanical specifications				
Connector	N-K	N-K	N-K	N-K
Dimension (mm)	400×300	600×400	Φ600	Φ900
Net Weight (kg)	1.4	2.4	5	10
Operation Temperature (°C)	-40~+60	-40~+60	-40~+60	-40~+60
<p>Description: For 3.5GHz WiMAX system; high gain, good effect, Applicable to wireless access systems, point-to-point wireless bridge</p>				

5.8 GHz PANEL ANTENNAS



Model: SRFS-5800D90D16
Name: 5.8GHz Panel Antenna



Model: SRFS-5800V90C17
Name: 5.8GHz Panel Antenna



Model: SRFS-5800V120C15
Name: 5.8GHz Panel Antenna

Model	SRFS-5800D90D16	SRFS-5800V90C17	SRFS-5800V120C15
Electrical specifications			
Frequency Range(MHz)	5725~5850	5725~5850	5725~5850
Gain(dBi)	16×2	17	15
Polarization	±45°	Vertical	Vertical
VSWR	≤1.5	≤1.5	≤1.5
Horizontal Beamwidth (°)	90	90	120
Vertical Beamwidth(°)	8	7	7
Front-to-Back Ratio (dBi)	≥25	≥25	≥23
Impedance (Ω)	50	50	50
Max. Power (W)	100	100	100
Mechanical specifications			
Connector	N-K	N-K	N-K
Dimension (mm)	450×168×56	450×128×56	450×128×56
Net Weight (kg)	2.0	1.2	1.4
Operation Temperature (°C)	-40~+60	-40~+60	-40~+60
Description: For5GHz frequency ,WLAN /Wi-Fi system, Support IEEE802.11a; Sector coverage Applicable to wireless access systems, Multipoint wireless bridge. .			



Model: **SRFS-5158PG18**
Name: 5.8GHz Panel Antenna

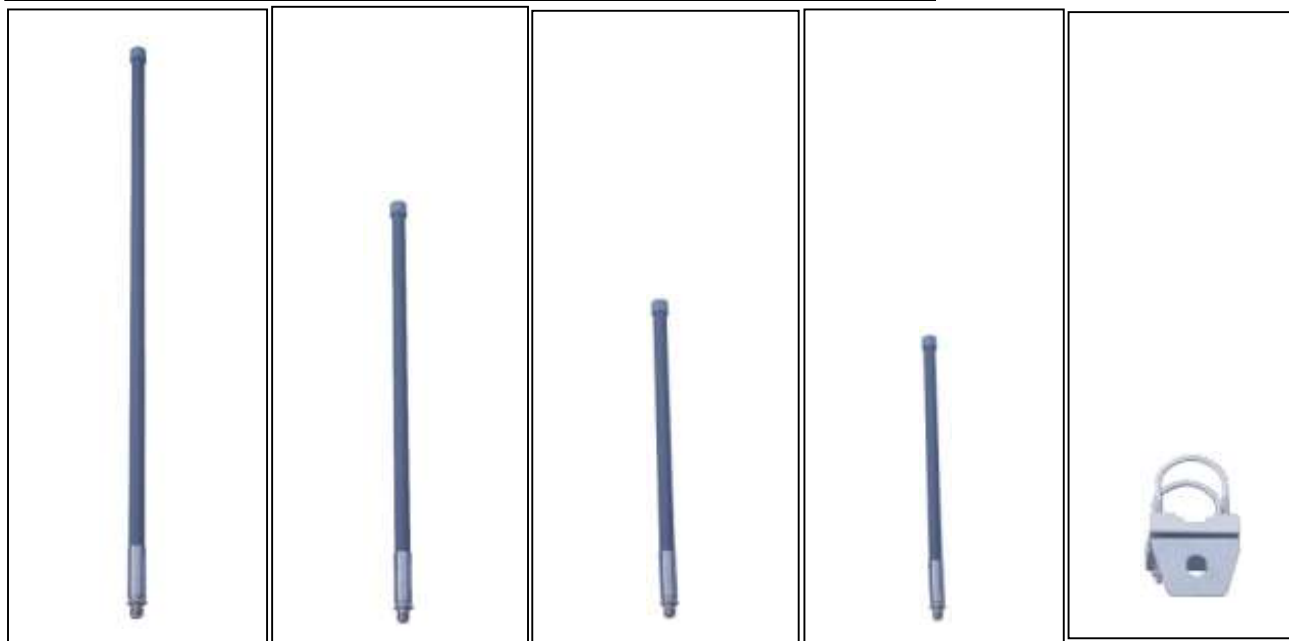
Model: **SRFS-5158PB15V90**
Name: 5.8GHz Panel Antenna

Model: **SRFS-5158PD18x2**
Name: 5.8GHz Panel Antenna

Model: **SRFS-5158EPF23**
Name: 5.8GHz Panel Antenna

Model	SRFS-5158PG18	SRFS-5158PB15V90	SRFS-5158PD18x2	SRFS-5158EPF23
Electrical specifications				
Frequency Range (MHz)	5150~5850	5150~5850	5150~5850	5150~5850
Gain (dBi)	18	15	18x2	23
Polarization	Vertical or horizontal	Vertical	Vertical or horizontal	Vertical or horizontal
VSWR	≤1.5	≤1.5	≤1.5	≤1.5
Vertical Beamwidth (°)	20	14	17	11
Horizontal Beamwidth (°)	20	90	17	11
Front-to-Back Ratio (dB)	≥25	≥25	≥25	≥25
Impedance (Ω)	50	50	50	50
Max. Power (W)	50	50	50	50
Mechanical specifications				
Connector	N-K	N-K	N-K	N-K
Dimension (mm)	190×190×30	235×195×35	260×260×35	305×305×25
Net Weight (kg)	0.55	0.75	1.4	2.5
Operation Temperature (°C)	-40~+60	-40~+60	-40~+60	-40~+60
Description: For 5GHz frequency WLAN / WiFi system, support IEEE802.11a; Wide range of applications, Applicable to a public hot spot coverage, Wireless digital image transmission, Point-to-point and point-to-multipoint wireless bridge.				

5.8 GHz FIBERGLASS OMNI DIRCTIONAL ANTENNAS



Model: SRFS-5800FA12
Name: 5.8GHzAntenna

Model: SRFS-5800FA10
Name: 5.8GHzAntenna

Model: SRFS-5800FA8
Name: 5.8GHz Antenna

Model: SRFS-5800FA6
Name: 5.8GHz Antenna

Model: SRFS-LC
Name: U Clamp

Model	SRFS-5800FA12	SRFS-5800FA10	SRFS-5800FA8	SRFS-5800FA6
Electrical specifications				
Frequency Range (MHz)	5725~5850	5725~5850	5725~5850	5725~5850
Gain (dBi)	12	10	8	6
Polarization	Vertical	Vertical	Vertical	Vertical
VSWR	≤1.5	≤1.5	≤1.5	≤1.5
Vertical Beam width (°)	7	10	16	25
Horizontal Beam width (°)	360	360	360	360
Impedance (Ω)	50	50	50	50
Max. Power (W)	50	50	50	50
Mechanical specifications				
Connector	N-K	N-K	N-K	N-K
Dimension (mm)	Φ21×550	Φ21×430	Φ21×330	Φ21×260
Net Weight (kg)	0.55	0.35	0.2	0.18
Operation Temperature (°C)	-40~+60	-40~+60	-40~+60	-40~+60

Description : For 5GHz frequency WLAN /WiFi system, support IEEE802.11a ; Wide range of applications, applicable to public hot spot coverage, Wireless digital image transmission, Point-to-point and point-to-multipoint wireless bridge.

5.8 GHz PARABOLIC ANTENNAS



Model: **SRFS-5800GP24**

Model: **SRFS-5800GP27**

Model: **SRFS-5800GP30**

Name: **5.8GHz Grid Parabolic Antenna**

Name: **5.8GHz Grid Parabolic Antenna**

Name: **5.8GHz Grid Parabolic Antenna**

Model	SRFS-5800GP24	SRFS-5800GP27	SRFS-5800GP30
Electrical specifications			
Frequency Range (MHz)	5725~5850	5725~5850	5725~5850
Gain (dBi)	24	27	30
Polarization	Vertical or horizontal	Vertical or horizontal	Vertical or horizontal
Horizontal Beam width (°)	9	6	4
Vertical Beam width (°)	12	9	6
VSWR	≤1.5	≤1.5	≤1.5
Front-to-Back Ratio (db)	≥20	≥25	≥32
Impedance (Ω)	50	50	50
Max. Power (W)	100	100	100
Mechanical specifications			
Connector	N-K	N-K	N-K
Dimension (mm)	400×300	600×400	900×600
Net Weight (kg)	1.4	2.4	4.6
Operation Temperature (°C)	-40~+60	-40~+60	-40~+60
Description: For 5 GHz frequency WLAN /WiFi system, Support IEEE802.11a; high gain, good effect Applies to wireless digital image transmission, Point-to-point wireless bridge .			

5.8 GHz PARABOLIC ANTENNAS



Model: SRFS-5800P29

Name: 5.8GHz Parabolic Antenna



Model: SRFS-5800P32

Name: 5.8GHz Parabolic Antenna



Model: SRFS-5800P34

Name: 5.8GHz Parabolic Antenna

Model	SRFS-5800P29	SRFS-5800P32	SRFS-5800P34
Electrical specifications			
Frequency Range (MHz)	5725~5850	5725~5850	5725~5850
Gain (dBi)	29	32	34
Polarization	Vertical or horizontal	Vertical or horizontal	Vertical or horizontal
VSWR	≤1.5	≤1.5	≤1.5
Horizontal Beamwidth (°)	6	4	3
Vertical Beamwidth (°)	6	4	3
Front-to-Back Ratio (dB)	≥20	≥25	≥32
Impedance (Ω)	50	50	50
Max. Power (W)	100	100	100
Mechanical specifications			
Connector	N-K	N-K	N-K
Dimension (mm)	Φ600	Φ900	Φ1250
Net Weight (kg)	5	10	24.5
Operation Temperature (°C)	-40~+60	-40~+60	-40~+60
Description: For5GHz frequency WLAN /Wi-Fi system, Support IEEE802.11a; high gain good effect Applies to wireless digital image transmission, Point-to-point wireless bridge.			

INTERFACE CABLE SERIES



Electrical specifications					Mechanical specifications		
Model	Frequency Range (MHz)	VSWR	Insertion Loss (dB)	Impedance (Ω)	Connector	Cable	Length (mm)
SMB-MCX-60	DC-3000	≤ 1.3	≤ 0.2	50	SMB-MCX	RG174	60 or customized
IPEX-IPEX-60	DC-3000	≤ 1.3	≤ 0.2	50	IPEX-IPEX	1.13	60 or customized
TNC-MCX-60	DC-3000	≤ 1.3	≤ 0.2	50	TNC-MCX	RG174	60 or customized
CRC9-FME-60	DC-3000	≤ 1.3	≤ 0.2	50	CRC9-FME	RG316	60 or customized
SMA-IPEX-100	DC-3000	≤ 1.3	≤ 0.2	50	SMA-IPEX	1.13	100 or customized
Fakra-SMA-100	DC-3000	≤ 1.3	≤ 0.2	50	Fakra-SMA	RG178	100 or customized
BNC-MCX-100	DC-3000	≤ 1.3	≤ 0.2	50	BNC-MCX	RG178	100 or customized
NJ-NK-300	DC-3000	≤ 1.3	≤ 0.2	50	NJ-NK	3D-FB	300 or customized

Description: The connection between the RF port or module to the antenna used in a variety of devices

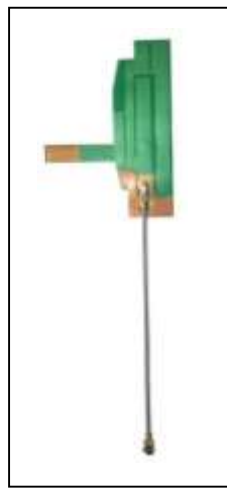
INTERNAL ANTENNA SERIES



SRFS-0819ITF1-60
GSM Antenna



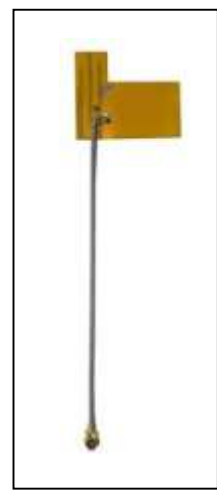
SRFS-0918ITF2-60
GSM Antenna



SRFS-0819ITF3-60
GSM Antenna



SRFS-2400ITF4-60
WiFi Antenna



SRFS-2400ITF5-60
WiFi Antenna

Model	SRFS-0819ITF1-60	SRFS-0918ITF2-60	SRFS-0819ITF3-60	SRFS-2400ITF4-60	SRFS-2400ITF5-60
Electrical specifications					
Frequency Range (MHz)	850/900/1800/1900	900/1800	850/900/1800/1900	2400-2483	2400-2483
VSWR	≤2.5	≤2.5	≤2.5	≤2.0	≤2.0
Gain (dBi)	2.0	2.0	2.0	2.0	2.0
Polarization	Vertical	Vertical	Vertical	Vertical	Vertical
Impedance(Ω)	50	50	50	50	50
Max. Power (W)	20	20	20	20	20
Mechanical specifications					
Connector	IPEX	IPEX	IPEX	IPEX	IPEX
Dimension(mm)	50×10×0.6	40×5.5×0.6	46.5×33.5×0.2	26×6.5×0.6	18.3×22×0.2
Cable Length(mm)	60 or customized	60 or customized	60 or customized	60 or customized	60 or customized
Material	FR4	FR4	FPC	FR4	FPC
Mounting Way	3M Adhesive	3M Adhesive	3M Adhesive	3M Adhesive	3M Adhesive
Operation Temperature(°C)	-40~+60	-40~+60	-40~+60	-40~+60	-40~+60
Humidity(%)	5~95	5~95	5~95	5~95	5~95
Description: Application in GSM/GPRS/2.4GHz WLAN / WiFi system and the user terminal.					



SIGNITY RF SOLUTIONS

***Plot No. 5 (Shop No. 606)
Pradhan Chowk, Vikas Nagar
Uttam Nagar, New Delhi – 110018***

Contacts

Rajiv Sachdeva +91-8800726650

Akansha Singh +91-7088680061