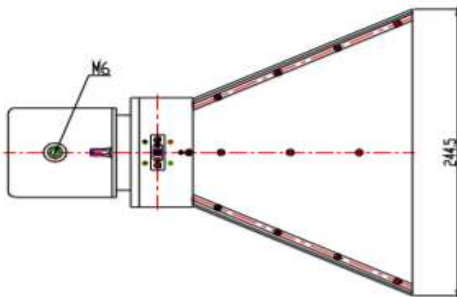
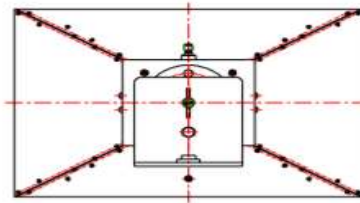
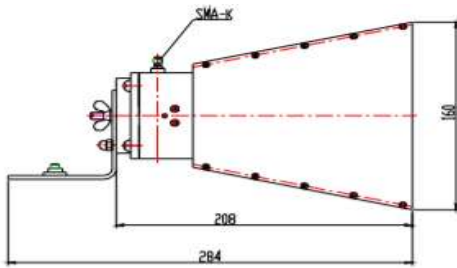
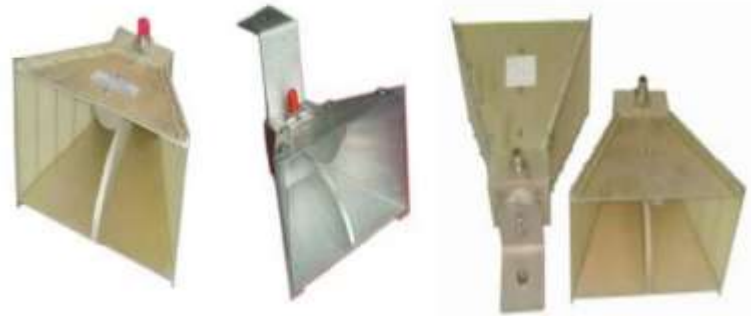


Wideband Dual-ridged Horn Antenna

Model No. SRFS10180DRHA10SK



Electrical Specification

Frequency Range	1-18 GHz
Gain (Avg)	10 dBi
VSWR (max)	1.5:1
Impedance	50Ω
Power Handling	25 W (CW)
Polarization Isolation	25 dB
Beam width (Avg)	H:34°; E: 42 °

Mechanical Specification

Material	Aluminum/Brass
Connector	SMA (F) or Customized
Antenna Mount	Magnetic Base